

Before School Meeting Areas (if arriving before 8:12 bell) + After School Meeting Area (if not using the bus or getting picked up at the lower parking lot).

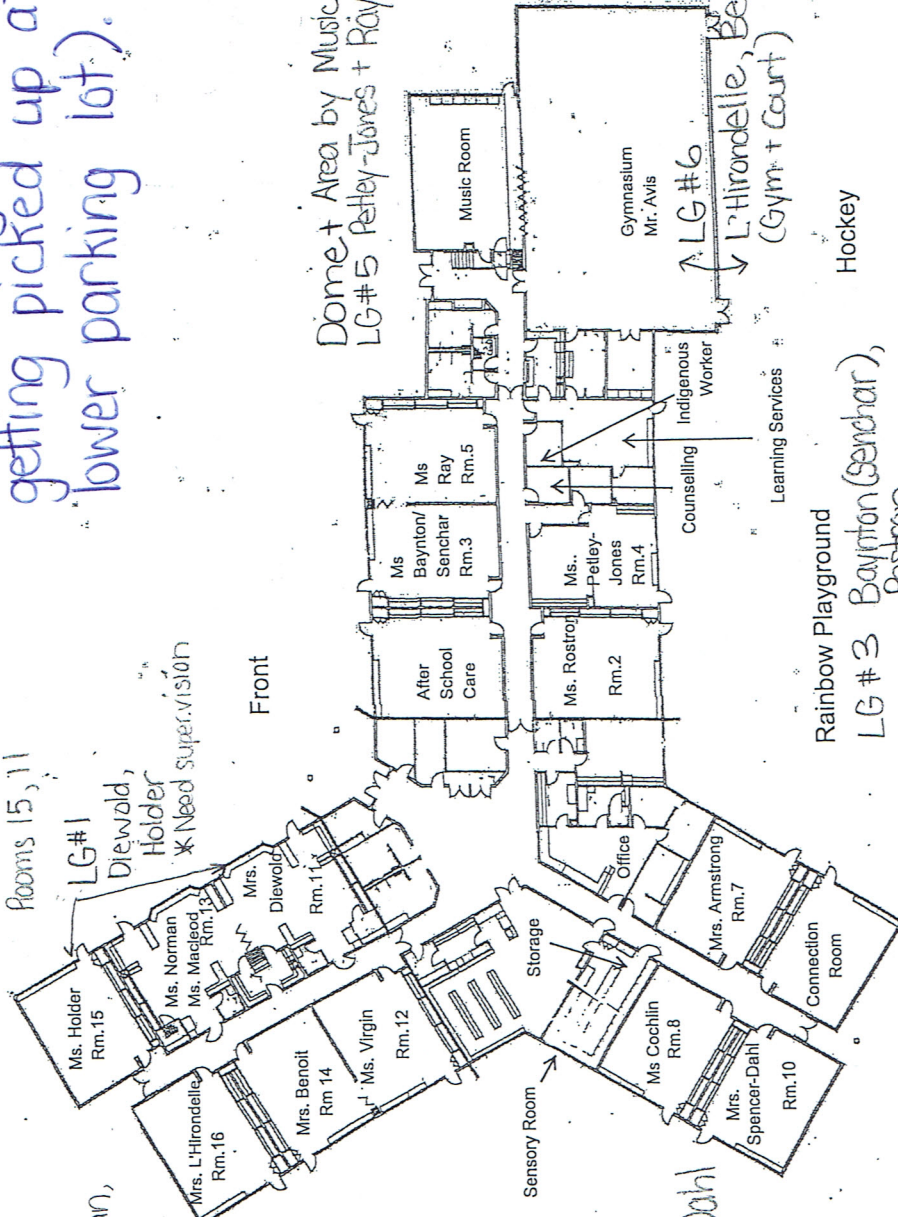
Kindergarten Area LG # 2
 Virgin, Norman, Armstrong

Rooms 15, 11
 LG # 1
 Diebold, Holder
 * Need Super. Vision

Front

Dome + Area by Music Room
 LG # 5
 Pettley-Jones + Ray
 Field & Sandbox

Swings + Monkey Bars
 LG # 4
 Cochlin, Spencer-Dahl



Rainbow Playground
 LG # 3
 Baynton (Senchar), Roston
 * Baynton/Senchar students enter through Roston's classroom when bell rings.

SCHOOL DISTRICT 69 QUALICUM | ERRINGTON ELEMENTARY SCHOOL